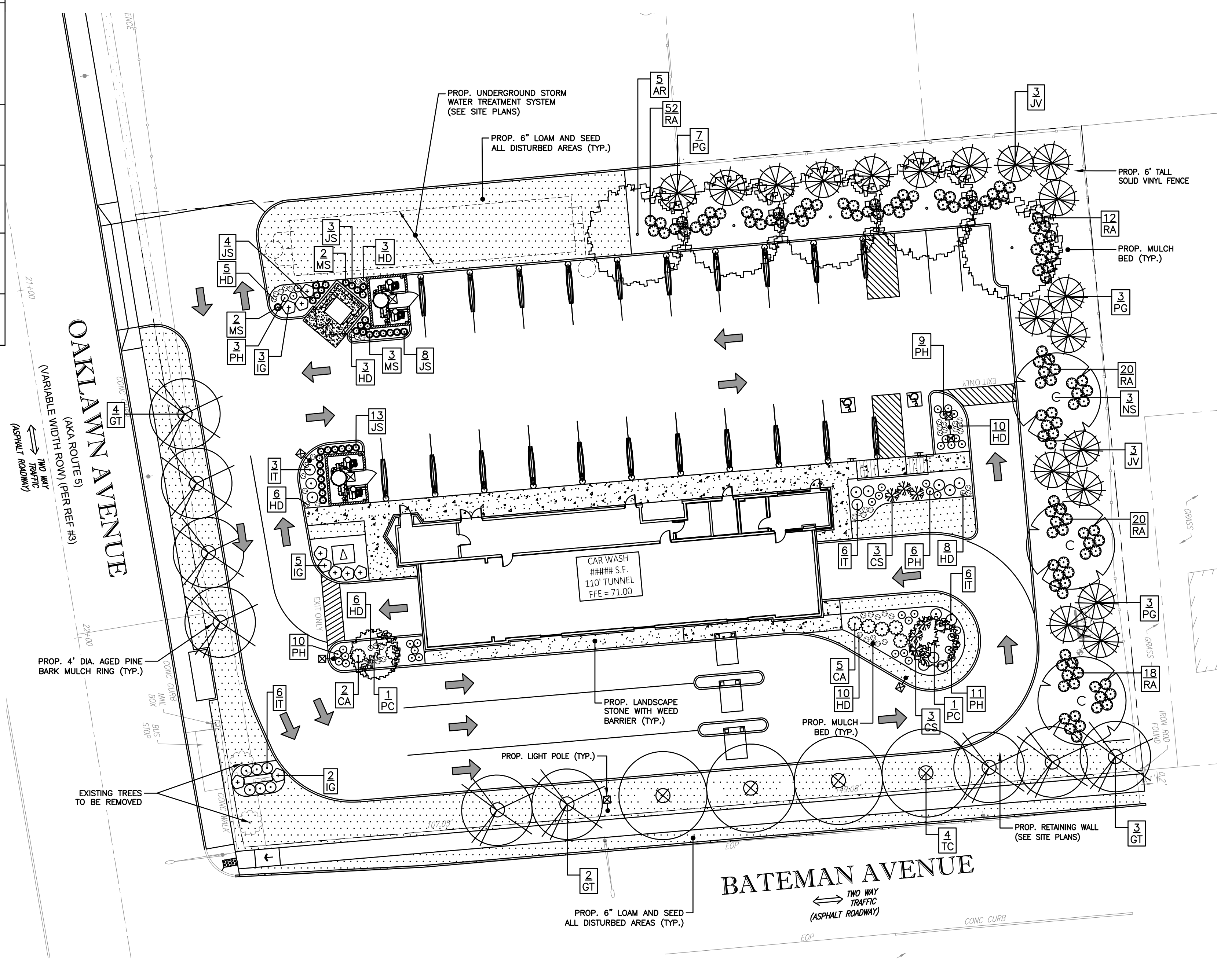
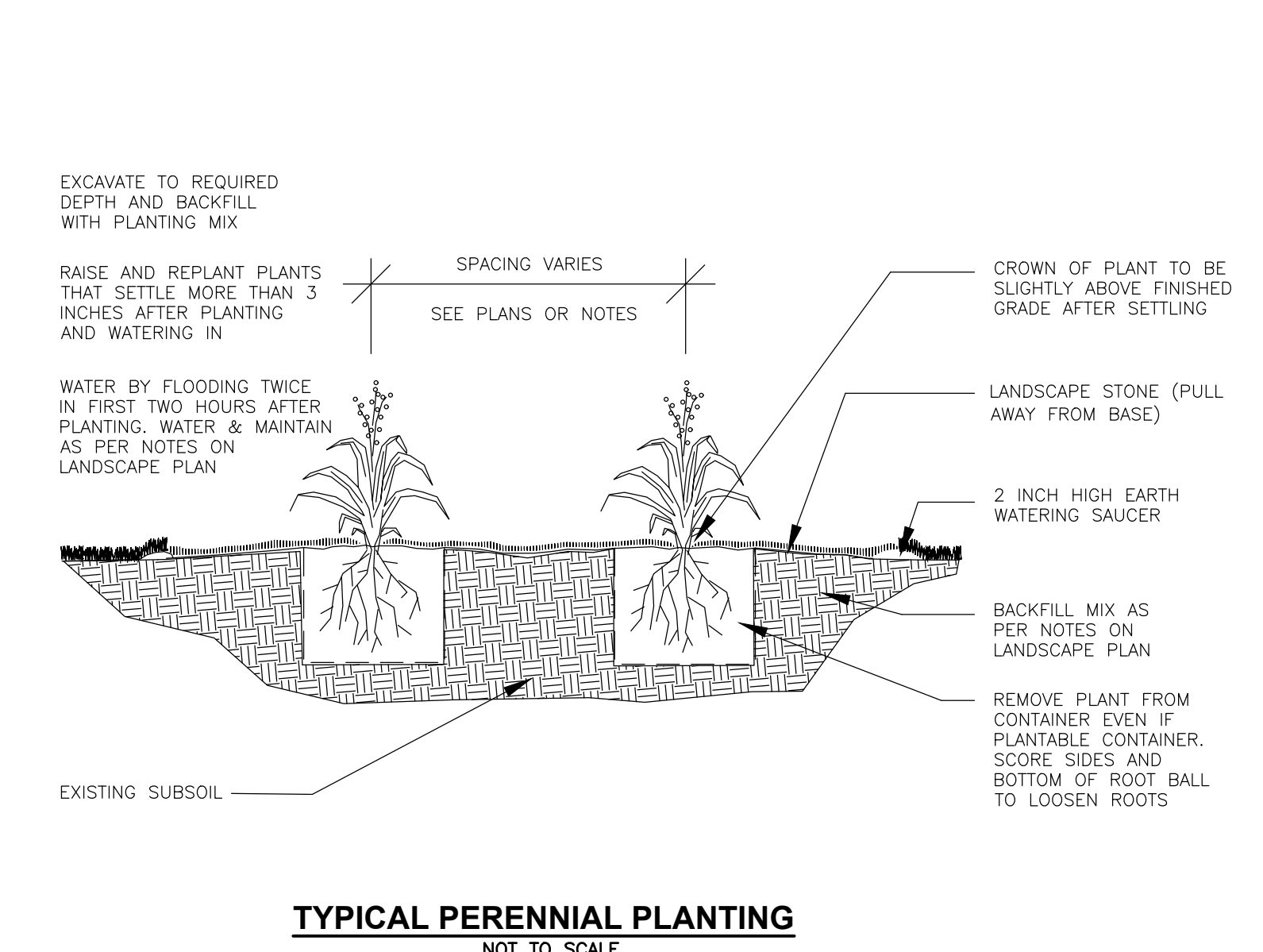
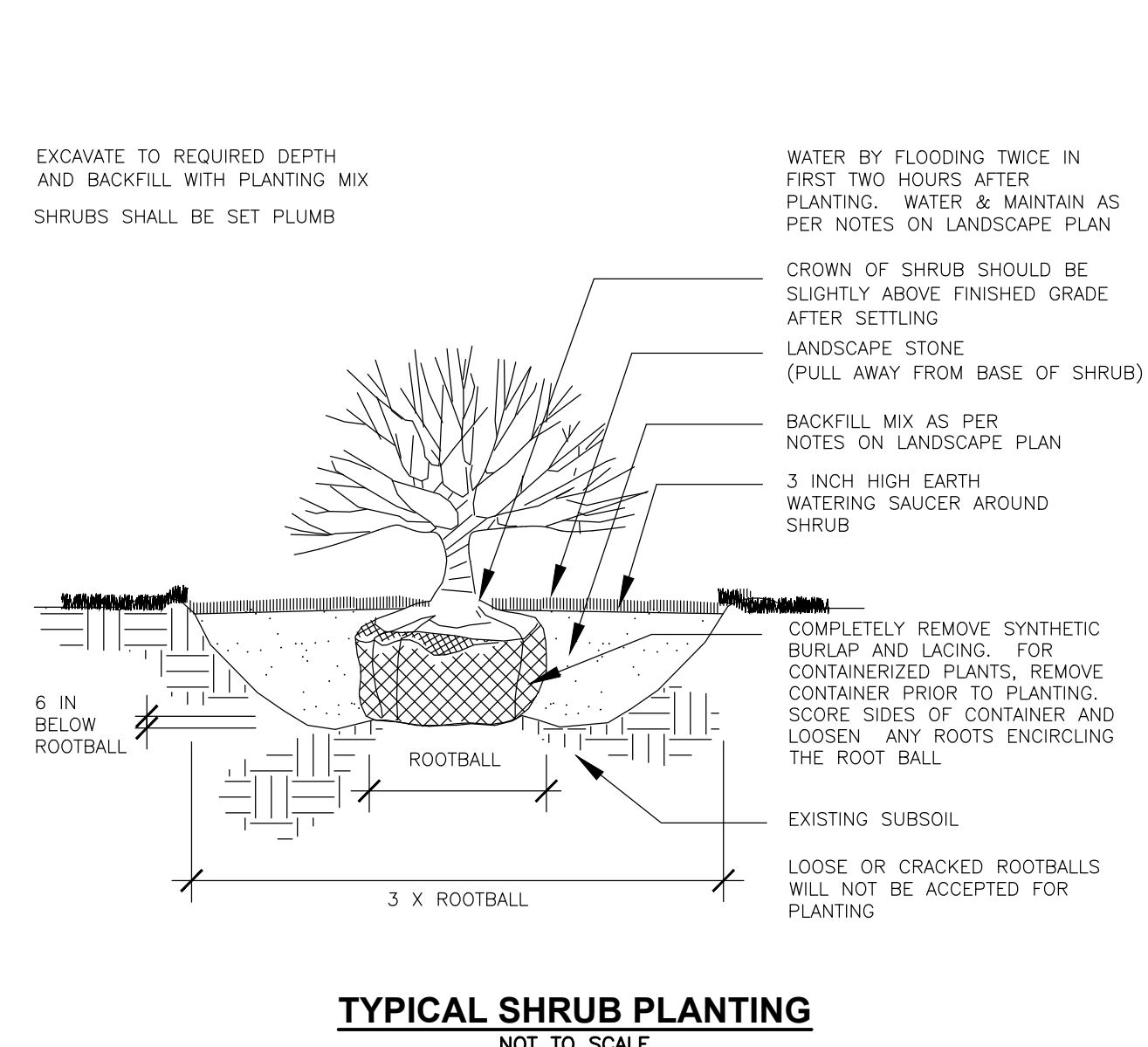
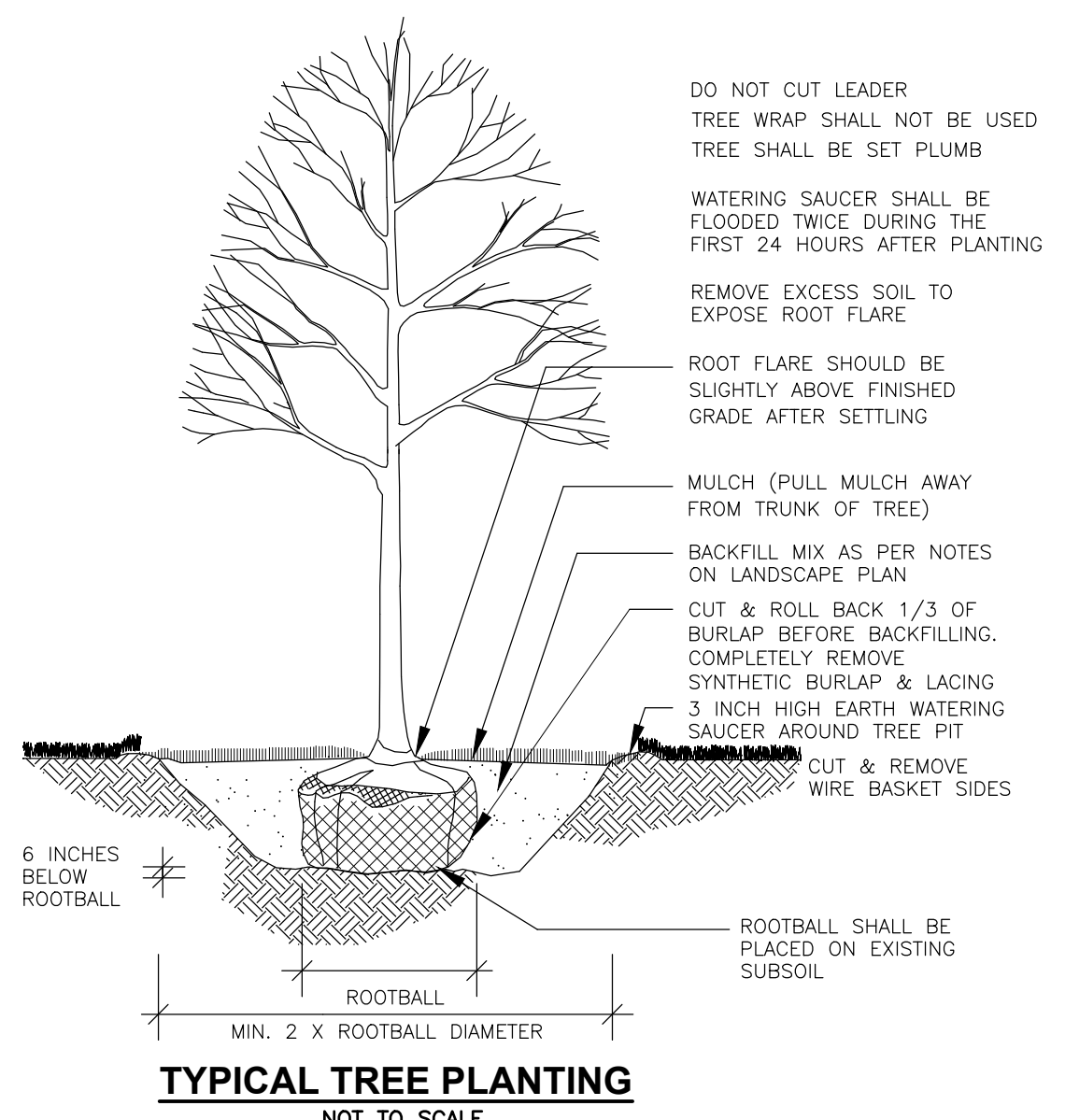


| PLANTING SCHEDULE | | | | | |
|---------------------------------|------|---------------------------------------|----------------------------------|----------------------|---------|
| PLANT | QNTY | BOTANICAL NAME | COMMON NAME | MIN. INSTALL. SIZE | REMARKS |
| TREES | | | | | |
| AR | 5 | ACER RUBRUM 'OCTOBER GLORY' | OCTOBER GLORY RED MAPLE | 2 1/2"-3" CAL., B&B | |
| GT | 9 | GLEDITSIA TRIACANTHOS 'STREET KEEPER' | STREET KEEPER HONEY LOCUST | 2 1/2"-3" CAL., B&B | |
| JV | 10 | JUNIPERUS VIRGINIANA | EASTERN RED CEDAR | 7" - 8" HT., B&B | |
| NS | 3 | NYSSA SYLVATICA | BLACK TUPELO | 2 1/2"-3" CAL., B&B | |
| PC | 2 | PRUNUS SARGENTII 'COLUMNARIS' | COLUMNAR SARGENT CHERRY | 2 1/2"-3" CAL., B&B | |
| PG | 13 | PICEA PLUNGENS 'GLAUCO' | COLORADO BLUE SPRUCE | 7" - 8" HT., B&B | |
| TC | 4 | TILIA CORDATA 'GREENSPIRE' | GREENSPIRE LITTLELEAF LINDEN | 2 1/2"-3" CAL., B&B | |
| SHRUBS | | | | | |
| CA | 7 | CLETHRA ALNIFOLIA 'HUMMINGBIRD' | HUMMINGBIRD SUMMERSWEET | 2'-3" HT., 3 GAL. | |
| CS | 6 | CORNUS SERICEA 'ALLEMAN'S COMPACTA' | COMPACT REDTIG DOGWOOD | 2'-3" HT., 3 GAL. | |
| IG | 10 | ILEX GLABRA 'COMPACTA' | COMPACT INKBERRY | 2'-3" HT., 3 GAL. | |
| IT | 21 | ITEA VIRGINICA 'LITTLE HENRY' | LITTLE HENRY VIRGINIA SWEETSPICE | 18"-24" HT., 3 GAL. | |
| JS | 28 | JUNIPERUS SCOPULORUM 'SKYROCKET' | SKYROCKET JUNIPER | 5' - 6" HT., B&B | |
| RA | 122 | RHUS AROMATICA 'GROW LOW' | GROW LOW SUMAC | 18"-24" SPR., 3 GAL. | |
| PERENNIALS & GRASSES | | | | | |
| MS | 7 | MISCANTHUS SINENSIS 'GRACILLIMUS' | MAIDEN GRASS | 2 GAL. | |
| HD | 51 | HEMEROCALLIS 'STELLA DE ORO' | DWARF YELLOW DAYLILY | 1 GAL. | |
| PH | 39 | PENNISETUM ALOPERCUROIDES 'HAMELI' | DWARF FOUNTAIN GRASS | 1 GAL. | |

PLANT QUANTITY
 PROPOSED LANDSCAPE STONE WITH WEED BARRIER
 PROPOSED LOAM AND SEED

LANDSCAPE REQUIREMENTS

| SPRINGFIELD SITE PLAN REGULATION | REQUIRED | PROVIDED |
|--|--|---|
| 17.84.140-C-1(b) LANDSCAPE STANDARDS - GENERAL REQUIREMENTS | A MINIMUM OF FIFTEEN (15) PERCENT OF A DEVELOPMENT'S PARCEL SHALL BE LANDSCAPED 48,120 SF X 15% = 7,218 SF | 31.4% LANDSCAPE AREA |
| 17.84.140-C-4(b) TREES | ONE STREET TREE SHALL BE PLANTED FOR EVERY THIRTY-FIVE (35) FEET OF FRONTAGE 439' FRONTAGE / 35' = 13 TREES | 13 TREES |
| 17.84.140-C-6(a) BUFFER STRIPS | ...PROVIDE AN APPROVED YEAR-ROUND BUFFER A MINIMUM OF EIGHT FEET IN HEIGHT, CONSISTING OF FENCING, VEGETATION... | PROPOSED 6' HIGH FENCING AND PROPOSED TREES >8' IN HEIGHT |
| 17.84.140-C-6(b) BUFFER STRIPS | MIN. 10' WIDE LANDSCAPE STRIP ALONG PROPERTY LINES PARALLEL TO A STREET WHERE PARKING OR CIRCULATION ARE ADJACENT TO SAID STREET MINIMUM 5' LANDSCAPE STRIP ALONG SIDE AND REAR PROPERTY LINES WHERE PARKING AND CIRCULATION ARE ADJACENT TO ADJUTING PROPERTIES WHERE A RESIDENTIAL USE ADJUTS NON-RESIDENTIAL USE, A 25' WIDE BUFFER STRIP MAY BE REQUIRED | >10' WIDE BUFFER >5' WIDE BUFFER >25' BUFFER PROVIDED |
| 17.84.140-C-7(a) PARKING AREA LANDSCAPE REQUIREMENTS | ...A MINIMUM OF TEN (10) SQUARE FEET OF LANDSCAPED AREA SHALL BE PROVIDED WITHIN A PARKING AREA FOR EACH PARKING SPACE IN SAID AREA 10 SF X 24 PARKING SPACES = 240 SF LANDSCAPE AREA | 348 SF PARKING LANDSCAPE AREA PROVIDED |
| 17.84.140-C-7(b) PARKING AREA LANDSCAPE REQUIREMENTS | 20% OF PARKING AREA SHALL BE SHADED BY DECIDUOUS TREES THAT SHALL HAVE A CROWN (CANOPY) OF 30' AT MATURITY SURROUNDED BY AT LEAST 100 SF OF UNPAVED AREA 10,431 SF PARKING AREA X 20% = 2,086 SF SHADED AREA REQUIRED | 8% PROVIDED (WAIVER REQUIRED) |
| 17.84.140-C-7(c) PARKING AREA LANDSCAPE REQUIREMENTS | EACH ROW OF PARKING SPACES SHALL BE TERMINATED BY A LANDSCAPED ISLAND NOT LESS THAN 6' WIDE AND 12' LONG | PROVIDED: > 6' WIDE >12' LONG |
| 17.84.140-C-7(d) PARKING AREA LANDSCAPE REQUIREMENTS | CONTINUOUS LANDSCAPED ISLAND NOT LESS THAN 8' WIDE SHALL BE PROVIDED BETWEEN EVERY 4 ROWS OF PARKING SPACES | N/A |



NOTES:

- ALL PLANT STOCK SHALL CONFORM TO ANSI Z260.1 - NURSERY STOCK, LATEST EDITION (AMERICAN ASSOCIATION OF NURSERYMEN, INC.).
- A 4" DIA. TREE RING WITH 3" AGED PINE BARK MULCH TO BE INSTALLED AT BASE OF ALL TREES IN LAWN AREAS.
- UNLESS NOTED OTHERWISE, 3" AGED PINE BARK MULCH SHALL BE APPLIED TO SHRUB AND GROUND COVER BEDS.
- LANDSCAPE STONE SHALL BE TAN RIVERBED STONE. STONE SHALL BE (1/2) INCHES IN DIAMETER AND APPLIED AT A THICKNESS OF (4) INCHES DEEP. ALL FINES SHALL BE SCREENED FROM THE AGGREGATE. THE MATERIAL SHALL BE FREE OF ORGANIC AND INORGANIC DEBRIS AND TRASH. SUBMIT SAMPLE IN A 5-GALLON BUCKET TO THE DEVELOPER FOR APPROVAL.
- A WEED BARRIER (TY-PAR FABRIC OR APPROVED EQUAL) SHALL BE APPLIED TO ALL SHRUB AND GROUND COVER BEDS. INSTALL WEED BARRIER AS PER MANUFACTURERS RECOMMENDATIONS.
- ALL LANDSCAPED AREAS NOT PLANTED WITH TREES, SHRUBS OR GROUND COVER SHALL BE RESTORED WITH SEED AS INDICATED ON PLANS.
- ALL SEED, SHRUB AND TREE AREAS SHALL RECEIVE 6" PH CORRECTED TOPSOIL. AFTER TOPSOIL IS SPREAD EVENLY OVER ENTIRE AREA, ALL CLODS, LUMPS, STONES AND OTHER DELETERIOUS MATERIAL SHALL BE RAKED UP AND REMOVED.
- APPLICATION OF GRASS SEED, FERTILIZERS AND STRAW MULCH SHALL BE ACCOMPLISHED BY BROADCAST SEEDING OR HYDROSEEDING AT THE RATES OUTLINED BELOW:

| SEED MIX (SLOPES LESS THAN 4:1) | LBS./ACRE |
|---------------------------------|-----------|
| CREeping RED FESCUE | 20 |
| TALL FESCUE | 5 |
| PERENNIAL RYEGRASS | 2 |
| REDTOP | 42 |
- NEWLY GRADED AREAS REQUIRING SLOPE PROTECTION OUTSIDE OF NORMAL SEEDING SEASON SHALL RECEIVE STRAW MULCH AT THE APPROXIMATE RATE OF NO MORE THAN 3 TONS PER ACRE.
- ANY CHANGES IN PLANT LOCATIONS OR TYPES SHALL BE APPROVED BY THE DEVELOPER, LANDOWNER AND CITY PRIOR TO INSTALLATION.
- CLEAR AND GRUB (TO LIMITS REQUIRED ON GRADING PLAN) TO REMOVE VEGETATION, TREES, ROCKS, DEBRIS, ROOTS, ETC. STUMPS SHALL BE REMOVED AND DISPOSED OF OFF SITE IN ACCORDANCE WITH STATE REGULATIONS. AFTER CLEARING, STRIP AND STOCKPILE ALL ON-SITE TOPSOIL FOR REUSE TO THE MAXIMUM EXTENT POSSIBLE.
- FOR SEED AREAS USE EXISTING TOPSOIL, IF AVAILABLE, FOR A 4" DEPTH AND TOP DRESS WITH 2" OF SCREENED TOPSOIL, UNLESS OTHERWISE NOTED ON PLAN. ALL LOAM OR TOPSOIL IMPORTED OR RE-UTILIZED FROM ON SITE SHALL BE TESTED AND AMENDED AS DIRECTED BY DEVELOPER TO MEET MINIMUM REQUIREMENTS.
- PLANTINGS SHALL BE GUARANTEED BY THE CONTRACTOR FOR ONE YEAR AFTER WRITTEN ACCEPTANCE BY THE DEVELOPER.
- EXPOSED SOILS SHALL BE SEED OR STRAW MULCHED WITHIN 72 HOURS OF FINAL GRADING.
- ALL WORK SHALL BE COORDINATED WITH APPLICABLE EPA NPDES/SWPPP PERMIT WORK AS REQUIRED.
- THE CONTRACTOR SHALL INSTALL AN IRRIGATION SYSTEM TO PROVIDE COMPLETE COVERAGE OF ALL SEED AREAS AND SHRUB BEDS SHOWN ON THIS PLAN. THE SYSTEM SHALL INCLUDE A TIMER, BACKFLOW PREVENTION AND SHALL BE INSTALLED IN ACCORDANCE WITH LOCAL CODES.

Corporate Office:
3025 Highland Parkway, Suite 850
Downers Grove, IL 60515
Info@sevasolutions.com www.sevasolutions.com

| REVISIONS | | |
|-----------|------|-------------|
| NO. | DATE | DESCRIPTION |
| | | |
| | | |
| | | |
| | | |

LANDSCAPE CONSULTANT

Greenwich Professional, Inc.
44 Shales Road, Suite One
Salem, NH 03079

SEAL

RONALD S. HEATH
NO. 394
10.09.2022

CUSTOMER

PROJECT DESCRIPTION

WASHVILLE CARWASH

PROJECT LOCATION

1300-1310 OAKLAWN AVE. CRANSTON, RI 02920

(PROVIDENCE COUNTY)

SHEET TITLE

LANDSCAPE PLAN

SHEET MANAGEMENT

PROJECT NO.: -
DATE: -
CRITERIA: -
PROJECT MANAGER: -

THIS DOCUMENT IS AND SHALL REMAIN THE PROPERTY OF SEVA SOLUTIONS, INC. NO PART OF THIS DOCUMENT SHALL BE REPRODUCED OR TRANSMITTED IN ANY FORM OR BY ANY MEANS, ELECTRONIC OR MECHANICAL, INCLUDING PHOTOCOPYING, RECORDING, OR BY ANY INFORMATION STORAGE AND RETRIEVAL SYSTEM, WITHOUT THE EXPRESS WRITTEN PERMISSION OF SEVA SOLUTIONS, INC. © 2022. NOT REPRODUCED WITHOUT PERMISSION.

SHEET NUMBER

L1.20

FILE NAME: P:\Projects\NEX-220027 - Cranston, RI - GR Development LLC\CAD Files\L20027_39.dwg LAST SAVED BY: Christopher Saris SAVED DATE: 10/3/2022 10:31 AM PLOTTED: 10/3/2022 10:22 AM

